

KILLARD INFRASTRUCTURE

CAPABILITY STATEMENT





Mission Statement

To safely and sustainably provide infrastructure for future generations through the creation of valued relationships with clients and communities.



Company Overview

Established in 1999, Killard Group offers pipe design and construction utilising conventional civil engineering, bulk earthworks and concrete structures services.

Killard Group is a multi-functional civil construction company who have gained an outstanding reputation in the water utility industry. With over twenty years' experience working with sewer, water and storm water mains, Killard have delivered over 300 successful projects on time and within budget to many satisfied clients throughout Australia.

Our focus is to build, maintain, replace and extend complex infrastructure for our clients and communities throughout Australia by investing in innovative technology and securing a safe and sustainable future for all.

Our extensive expertise in engineering, design, water and wastewater installations, treatment solutions, bulk earthworks and road building allows us to deliver customer satisfaction and project accomplishment every time.

Services



Water Mains
Renewals



Reticulated
Mains



Slip & Tite Lining
Water Main



Storm
Water



Non Destructive
Digging



Underground
Power Installation



Treatment
Plants



Oil & Gas
Pipelines



Trunk
Mains



Sewer System
Installation



Concrete
Structures



Culvert
Remediation



Civil
Works/Bulk
Earthworks



Pump
Stations



Cleaning &
Disinfection
of Mains

Safety & Accreditations



ISO 45001:2018
Safety Management Systems



ISO 14001:2015
Quality Management Systems



ISO 9001:2015
Environmental Management System

Killard has a strong focus on health & safety for all staff, contractors, clients and residents where the work is being completed. Our fully integrated, accredited management system allows us to ensure that our project specific HSEQ plans deliver the best possible outcome to our clients. We believe that protecting people and the environment generates sustainable value, therefore we actively manage the risks and impacts of our activities.



PROSPECT SOUTH TO MACARTHUR LINK Sydney Water/Acciona

 **Design & Build Dates** Jan 2021 - Nov 2021

 **Contract Value** \$14M approx.

 **Safety & Environmental** 0 Incidents

Works Performed:

- Installation of various diameter water mains.

Pipes Sizes & Length:

- | | |
|---|--|
| - 410m of DN600 off take situated along Range Road connected to Elizabeth Drive | - 590m of DN750 off take situated along Western Road which connects to Elizabeth Drive |
| - 1570m of DN1200 steel SWJ pipework from Range Road to Cross Street. | - 1900m of DN1050 steel SWJ pipework from Cross Street to Western Road. |

Achievements:

- Best contractor of entire program in the months of January to April
- Works ahead of the schedule

Projects



THE CANBERRA METRO CONSTRUCTION PROJECT

John Holland & CPB JV

 **Design & Build Dates** Oct 2017 – Dec 2019

 **Contract Value** \$14M approx.

 **Safety & Environmental** 0 Incidents

The project scope involved civil infrastructure works supporting the JV. This included laying of new pipe, condition assessment, asset relocation and rehabilitation works for existing pipework, conduits and civils. The Canberra light rail network, also known as Canberra Metro, is a light rail system serving the city of Canberra. The initial 12-kilometre line links the northern town centre of Gungahlin to the city centre (Civic) and has 13 stops. Services commenced on 20 April 2019. A stage 2 extension of the line south to the Woden Town Centre is currently being planned.

Works Performed:

- Construct, Rehabilitate, Asset Relocation.
- Condition Assessment.
- Installation of combined services route conduits (electrical and comms) including pole foundations.
- Intersection rebuilds working under strict shutdown conditions.
- Non-destructive digging of all the services prior to construction works.

Pipe Sizes & Length:

- Stormwater pipes ranging from DN150 PVC to DN750 Concrete. Approx. 4km.
- CIPP Liners for stormwater culverts DN675, DN1050, DN1200 & DN1500

Achievements:

- Best contractor of the month, for November 2017.



GOULBURN WATER MAIN & RECYCLED WATER MAIN RENEWAL / CONSTRUCTION

Goulburn Mulwaree Council

 **Design & Build Dates** Dec 2020 - End 2024

 **Contract Value** \$12.1M approx.

 **Safety & Environmental** 0 Incidents

Killard Infrastructure has been awarded a 3 years (+ 2 years option) contract to deliver the potable water renewal program in Goulburn and Marulan. The scope included the design, supply of labour, materials, plant and equipment for the design and construction, maintenance and repair of water infrastructures.

Works Performed:

Killard was engaged to design and construct the following:

- Total project – 9800m PVC pipe (ranging from DN100 – DN250), Lilac mPVC Pipes (PN16 & PN20)
- Installation of the pipeline in residential areas – including the boring of RMS roads
- Multiple directional horizontal drilling under busy roads
- 4 Creek crossings (built into bridges / hang on side of bridge / bored)
- Provision of our in-house Traffic Control services.

Pipe Sizes & Length:

- - Potable: mPVC Pipes (PN16 & PN20) HDPE Pipes (PN16 and 20) - ranging from DN150 to DN300
- - Recycled: PVC pipe (ranging from DN150 – DN250), Lilac mPVC Pipes (PN16 & PN20)



ROUSE HILL TRANSFER MAIN - GRAVITY MAIN

Confluence and Sydney Water

 **Design & Build Dates** Jul 2021 – Oct 2021

 **Contract Value** \$800k

 **Safety & Environmental** 0 Incidents

Due to high growth and significant projected growth along the Metro Northwest growth corridor, the Rouse Hill Water Recycling Plant (WRP) is rapidly approaching treatment capacity limits. As a temporary means to increase treatment capacity, excess sewage from the Rouse Hill Water Recycling Plant is proposed to be transferred by a new pipeline in the Riverstone network for treatment at the Riverstone Wastewater Treatment Plant.

Works Performed:

- Locating existing services
- Installation of pipes by open cut trenching (up to 5m deep)
- Construct manholes along the gravity main including the discharge chamber
- Connection to the existing developer manhole at chainage 0.00
- Testing and commissioning
- Site restoration.

Pipe Sizes & Length:

- **Gravity Main: 840m of DN450 GRP to DN375.**
- **10 Cast in situ DN1200 Manholes**

Achievements:

- Project delivered ontime and budget
- Detailed planning and effective stakeholder engagement undertaken resulting in no complaints from private owners.



MACAY PARK WATER & SEWER AUGMENTATION - STAGE 1

Eurobodalla Shire Council

 **Design & Build Dates** Sep 2021 - Apr 2022

 **Contract Value** \$3.4M approx.

 **Safety & Environmental** 0 Incidents

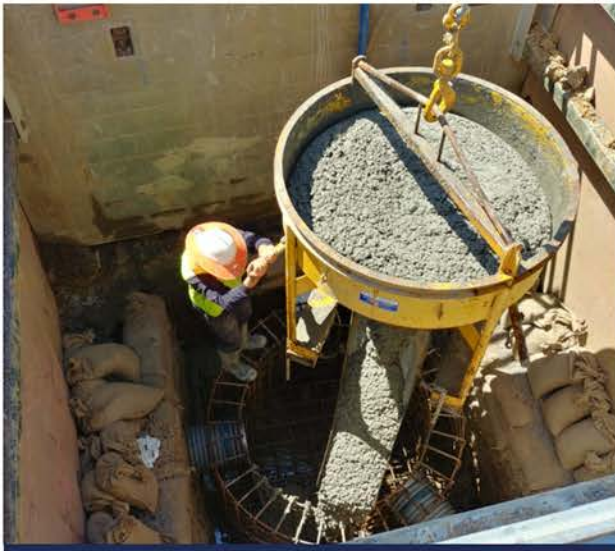
The new water & sewer mains and pumping station project for Eurobodalla Council was initiated to accommodate future infrastructure including the new exhibition centre in Batemans Bay, NSW. The new gravity sewer main discharges the flow to a new pump station. Flow is then pumped over to the other side of town to be discharged at a downstream location near the wastewater treatment plant. In addition, a new DN450 DICL trunk watermain was installed to upgrade the existing asbestos watermain.

Works Performed:

- Supply and installation of sewerage gravity mains and associated DN1050 manholes.
- Supply and construction of a new sewerage pump station with associated valve chamber, flowmeter pit, inlet manhole, pipework, mechanical works, electrical works including switchboards and SCADA, odour control system, and access roadworks.
- Supply and installation of sewer rising main.
- Supply and installation of Trunk watermain
- Testing and commissioning.

Pipe Sizes & Length:

- **Sewer Gravity Main: 750m of DN150, DN225 and DN300 uPVC.**
- **Sewer Rising Main: 1Km of HDPE OD225.**
- **Trunk Water Main: 800m of DN450 DICL.**
- **DN1050 manholes.**



LEPPINGTON SEWER WORKS - STAGE 2

Comdain Infrastructure & Sydney Water

 **Design & Build Dates** Dec 2018- Nov 2019

 **Contract Value** \$1.7M approx.

 **Safety & Environmental** 0 Incidents

As part of the South West Growth Centre plan by the NSW Government to release land for residential development, Sydney Water created sewerage infrastructure to service 3,500 dwellings.

Laying pipe in water charged ground up to 5m deep demonstrated our expertise and commitment to prioritize WH&S and Environmental procedures to meet legislative requirements, worker safety and our understanding of complex construction issues including the use of precast, as well as our ability to communicate and collaborate with contractors to deliver Sydney Water projects solution for the client.

Works Performed:

Our project scope included the construction of The Bonds Creek Carrier Section 2 (Open-Cut sections), lead in pipe sections (Open-cut), adjoining Vent shafts, associated maintenance holes and Entry and Exit Bore-Shafts & surrounding hard-standing for the micro-tunneling contractor.

Pipe Sizes & Length:

Comdain were awarded stage 2. The wastewater infrastructure works is the second section of the Bringelly Road carrier and the Bonds Creek carrier, and included:

- 2 kilometers of gravity main from the Bonds Creek carrier
- 2.5 kilometers of lead-in pipes in the area.



PARRAMATTA LIGHT RAIL STAGE 1 - UTILITY WORKS

CPB-DOWNER JV

 **Design & Build Dates** Aug 2020 - Dec 2021

 **Contract Value** \$1.8M approx.

 **Safety & Environmental** 0 Incidents

Parramatta Connect (CPB-Downer JV) engaged Killard Infrastructure to relocate / upgrade all the existing services in Church St between Ross St and Palmer St affected by the future construction of the Parramatta Light Rail Stage 1. The works were carried out on days and nights within schedule. Despite the highly congested area with existing services and the heavy traffic, the works were complete on time as expected by the client. Killard coordinated the works with the Principal's personnel as well as the Utility Asset Owners. In addition, Killard provides all traffic control services (Traffic Control Plans, Traffic Management Plan, Road Occupancy Licences management).

Works Performed:

The following construction works were involved in the project:

- Relocation of 90m of existing HV across Victoria Rd for Endeavour Energy.
- Relocation of existing DN225 and DN100 gas service across Church St and carry out the connections along Jemena team.
- Relocation and upsize of existing Sydney Water sewer with the installation of 2 new manholes in Victoria Rd and Church St.
- Concrete encasement of the existing Telstra conduits.
- Construction of two new Telstra manholes.

Our Fleet

Killard Group owns and operates a large fleet of plant and equipment:

- Wide range of excavators, varying from 1.7T to 48T depending on client and project needs.
- Extensive fleet of trucks including vaccum trucks, hook trucks, truck & dogs, tool truck, tipper trucks, hiab trucks and water cart trucks, amongst others.
- Growing fleet of site vehicles, utes, tool vans, 3T tippers and Traffic Control vehicles.
- Small plant of such rollers, bobcats, dumpers, shoring boxes, road plates, traffic lights and even wheeled trencher.



1.7T Excavators
2.5T Excavators
5T Excavators
13T Excavators
25T Excavators
35T Excavators

Vac Trucks
Hook Lift Trucks
3T Tippers
8T Tippers
Utes
Vans

Wheel Excavators
Rollers
Skid Steers
CCTV Van
Dumpers
Shoring Boxes



Our People

The most fundamental element to our company's success has been the team on the ground and behind the scenes who work together to produce outstanding results every time. Their hard work and dedication in meeting industry standards and satisfying our clients' needs has continually demonstrated why our team is a major player within the industry.



Jerry Daly

Managing Director

- Established Killard Infrastructure in 1999
- Over 40 years' experience within the Construction industry

Community & Sponsorship

As part of our long-standing commitment to our community we are dedicated to helping bring about change by supporting those who need it the most.

Killard Group has monthly and yearly donations to different charities including Purple hearts with Randwick FC, Australia's Biggest morning tea with Cancer Council, Arbour Foundation focusing on the reforestation of Australian forests and Sydney Special Children Christmas Party.

Killard Group also volunteer to different events along the year like beach clean-up day with Sydney Water and Confluence Water, NAIDOC week Family Fun Day, Plant a Tree Day with Goulburn Mulwaree Council and Blood Donor Week with Australian Red Cross Lifeblood.

We have previously supported the Charlie Teo Foundation. Charlie is one of the world's leading keyhole neurosurgeons who founded the 'Cure Brain Cancer Foundation' and 'Charlie Teo Foundation.

Young Ireland's Men & Woman's GAA Teams, Goulburn Stags, Tullow RFC and Sydney St Patrick's Day Festival are also some of our yearly sponsored parties. And we intend to continue sponsoring this communities and supporting them within our capabilities whenever they need us.

The successful of a company is on the hands of its people, in business and in our professional lives sometimes we forget that in the end of the day we are all humans, and it is those small acts of humanity that remind us of why we work so hard every day. To help those we love and those who need us the most. "



Our Project Partners

Government/Council



Construction/Private Enterprise



Water



Markets
we serve



Services Provided

- Applications
- Water reticulation
- Water trunk mains
- Stormwater drains
- Stormwater culverts
- Sewer reticulation
- Sewer trunk mains
- Trade waste pipelines
- Chemical lines
- Gas pipes
- Slurry pipelines



Industries & Sectors

- Local Government/Councils
- Road Authorities
- Rail Authorities
- Water
- Utilities
- Airports
- Oil and gas
- Industrial
- Chemical
- Mining



Typical Pipe Materials

- Reinforced concrete
- Unreinforced concrete
- Vitreous clay
- Corrugated steel
- Asbestos cement
- Brick
- Stone PVC/HDPE/GRP
- Steel/MCSL
- Iron/CICL/DICL
- Mini tunnels



Get in touch

Email us contact@killard.com.au

or contact one of our regional offices:

Sydney Head Office

 Suite L2/255 Rawson Street, Auburn NSW 2144

 02 9638 7000

Goulburn

 60 Robinson Street, Goulburn NSW 2580

 02 9638 7000

Shoalhaven

 72 Berry Street, Nowra NSW 2541

 02 9638 7000

Western Australia

 1117 Coolawanyah Road, Karratha WA 6714

 0417 267 147

 0488 445 016

Brisbane

 11B/853 Nudgee Rd Northgate QLD 4013

 0402 772 937